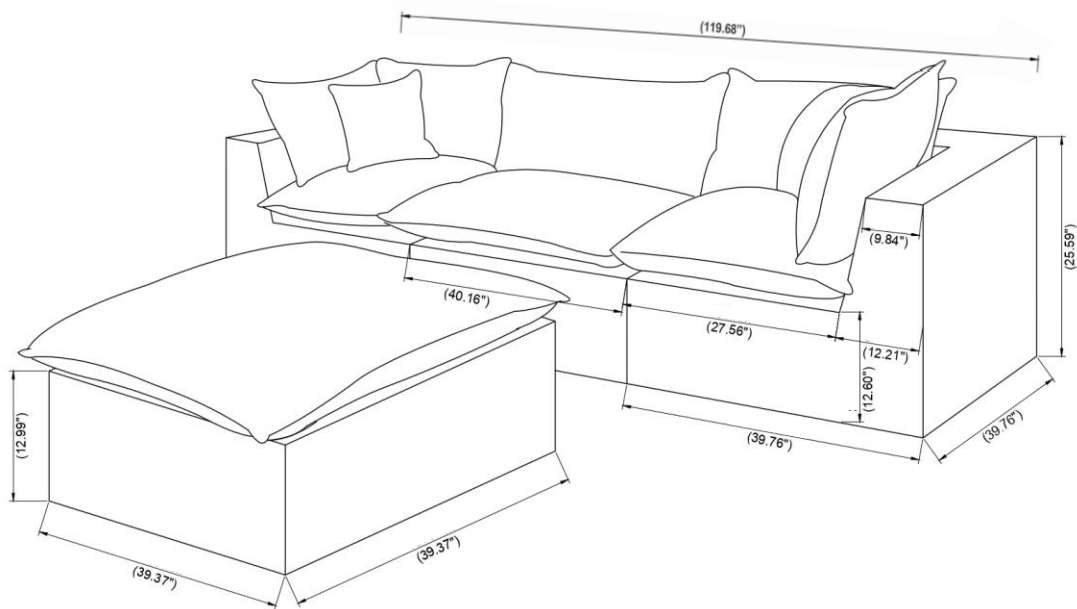




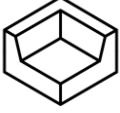
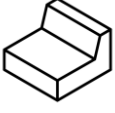
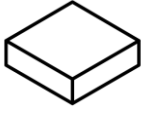
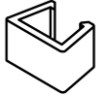

Cali Natural Wicker Outdoor

CALI

ASSEMBLY INSTRUCTIONS



PARTS LIST

LABEL	PICTURE	DESCRIPTION	QTY
1		CORNER	2
2		ARMLESS	1
3		OTTOMAN	1
4		CONNECTOR	6
5		CUSHIONS (Set 9pcs)	1

BEFORE BEGINNING ASSEMBLY:



Read instructions cover to cover



Have two adults on hand for assembly



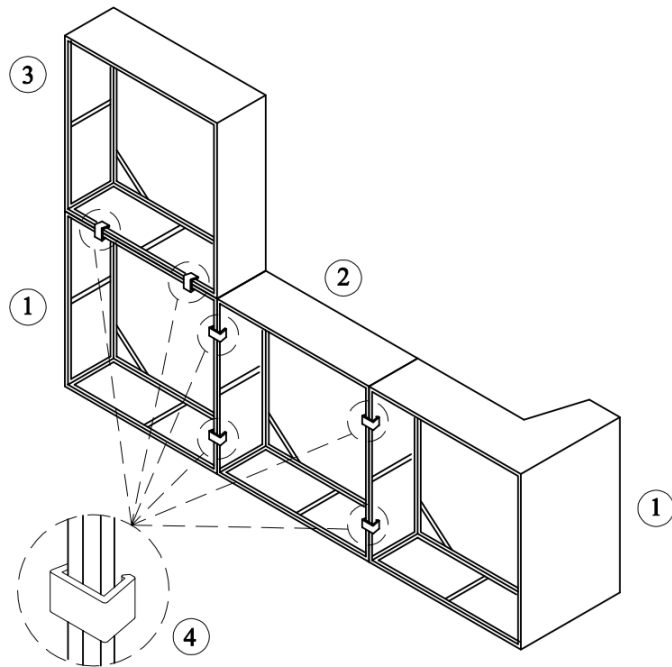
Do NOT assemble on flooring or carpet. Assemble on a clean non-marring surface (ex: packing foam)



Save all packaging until assembly is completed

ASSEMBLY STEPS

STEP 1



STEP 2

