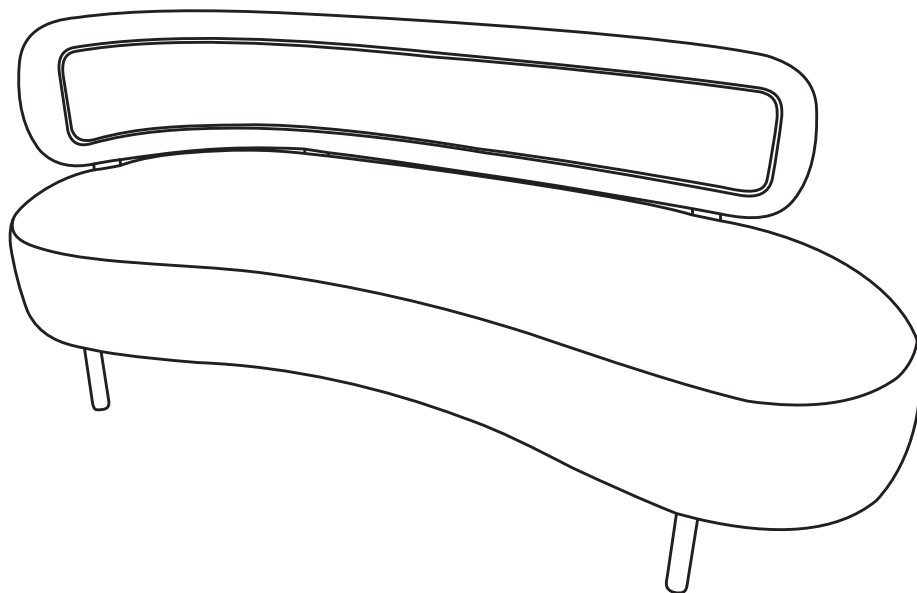


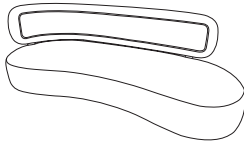
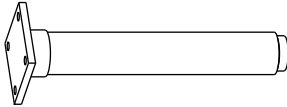
Tischa Velvet Sofa

TISCHA

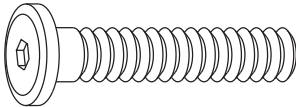

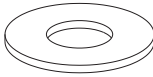

ASSEMBLY INSTRUCTIONS



PARTS LIST

LABEL	PICTURE	DESCRIPTION	QTY
A		Sofa seat	1
B		Legs	4

HARDWARE LIST

LABEL	PICTURE	DESCRIPTION	QTY
C		Bolts	16
D		Crush Washers	16
E		Washers	16
F		Wrench	1

BEFORE BEGINNING ASSEMBLY:



Read instructions cover to cover



Have two adults on hand for assembly



DO NOT assemble on flooring or carpet. Assemble on a clean non-marring surface (ex: packing foam)

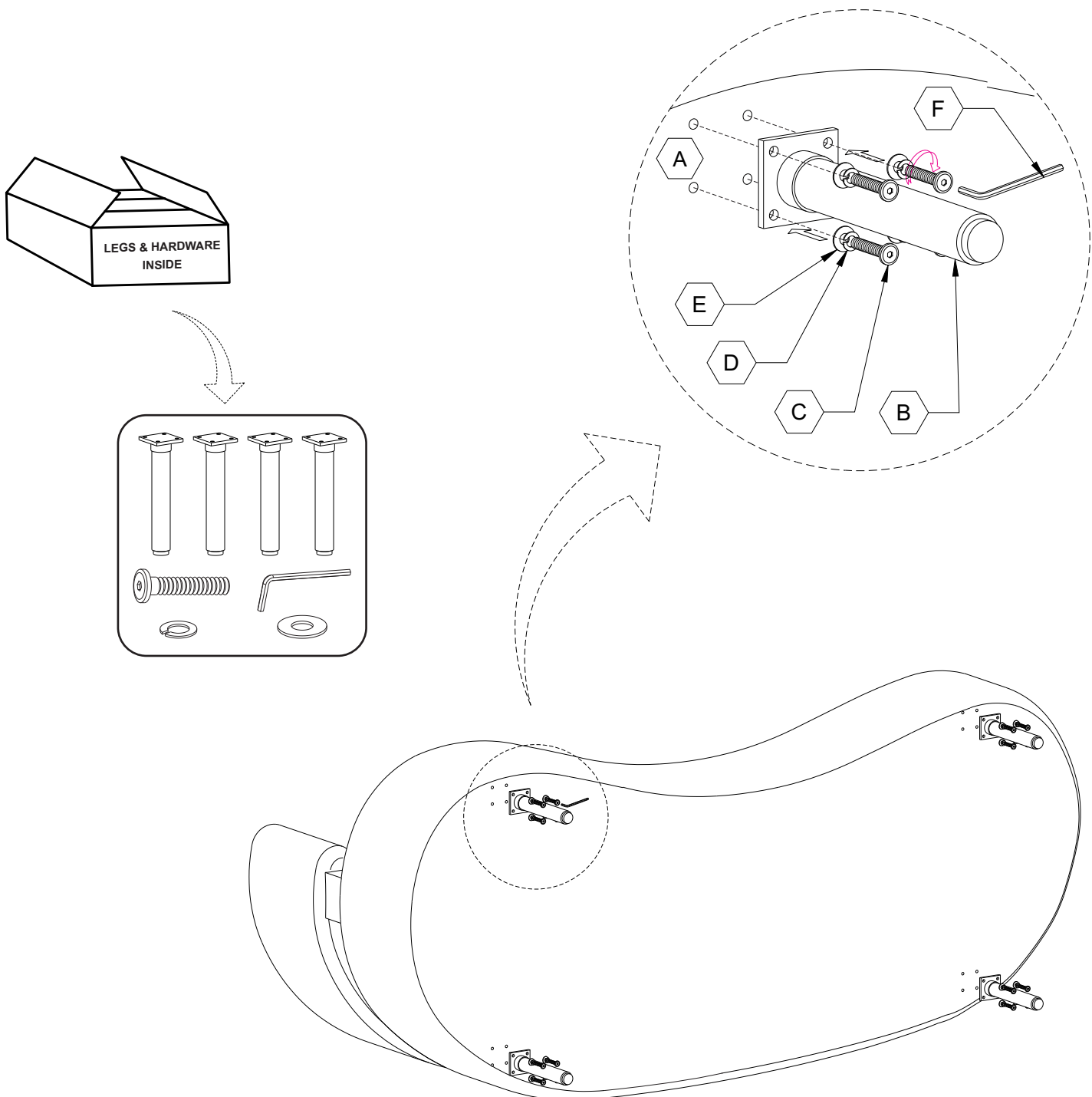


Save all packaging until assembly is completed

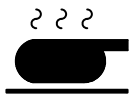
ASSEMBLY STEPS

STEP 1:

With another person, carefully place the sofa units back on a soft surface. Remove Legs **B**, Bolts **C** and Crush Washers **D** and Washers **E** from corrugated box, Underneath the sofa are holes with pre-installed threaded nuts, attach the legs **B** into pre-drilled holes using bolts **C**, crush washers **D** and washers **E**. Hand tighten all screws then finish with wrench **F**.



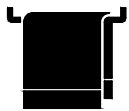
CARE & MAINTENANCE



Do not put hot items directly on furniture surface.



Do not clean furniture with harsh cleansers or polish.



Dust and pick up spills using a clean, non-colored, lint-free cloth.



Stains may be removed with a mild soap solution and a damp cloth.



Do not place furniture under direct sunlight.



Do not place furniture near heating or cooling vents.



Do not write on furniture without a padded barrier to protect the surface.



Do not place furniture outside, for indoor use only.