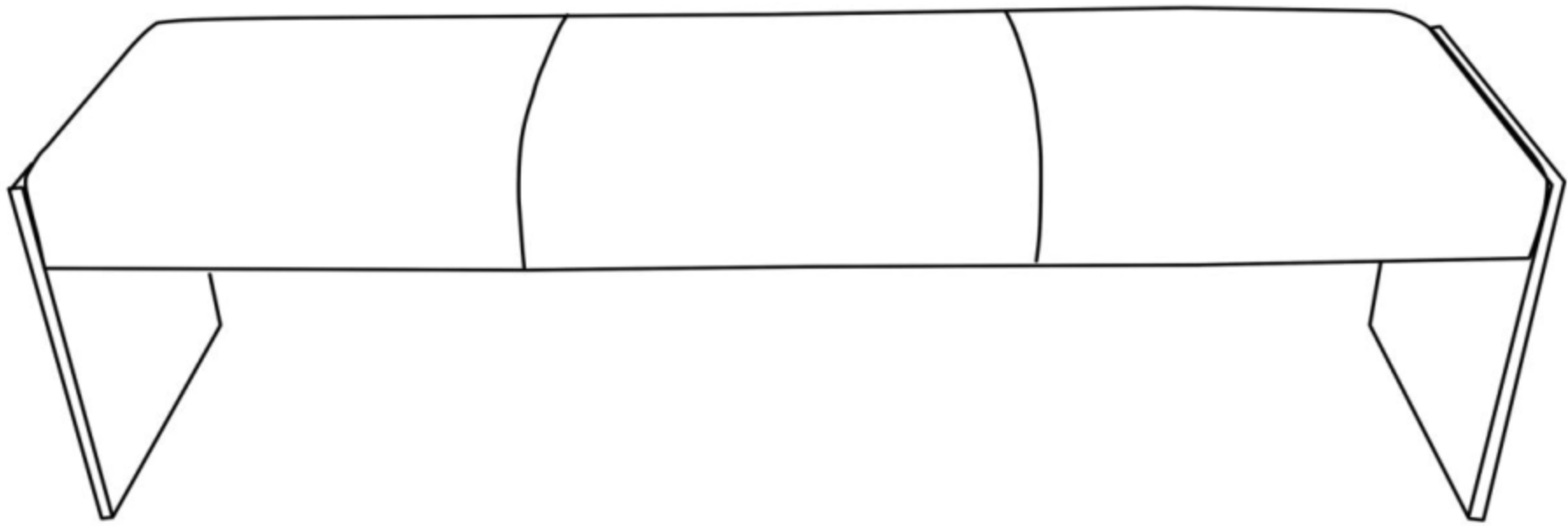








**TOV**



**Envy Acrylic  
Bench**

**DON'T BE BORING.**

# Hardware and Components

	.....	<b>A</b>	X 2 pcs
	.....	<b>B</b>	X 8 pcs
	.....	<b>C</b>	X 8 pcs
	.....	<b>D</b>	X 8 pcs
	.....	<b>E</b>	X 8 pcs (6mm x 40mm)
	.....	<b>F</b>	X 1 pc Allen Key-6mm

## Step 1

Open box of hardware and legs.

This hardware box will be a smaller box inside of the main box. Look for the red streamer.

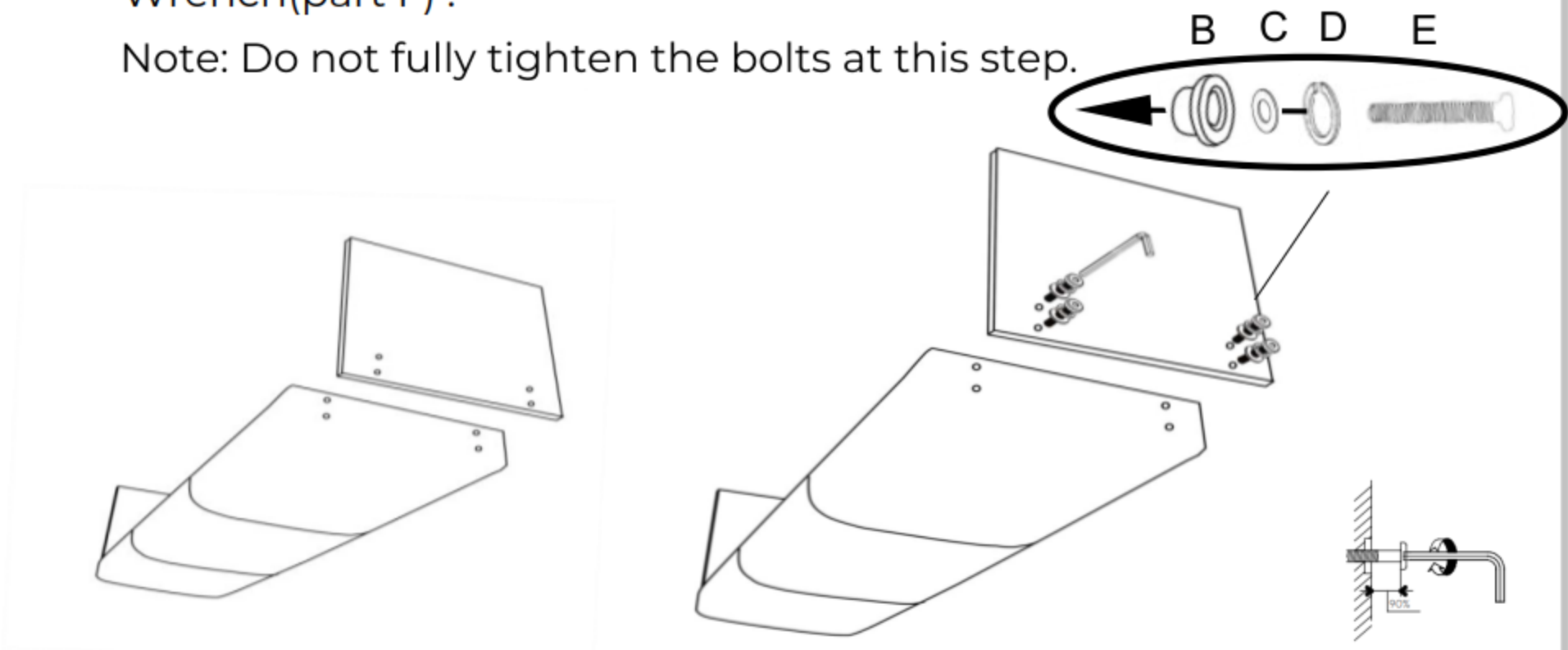


## Step 2

**A.** Get the Acrylic Legs (part A) and Bench body Ready as shown in the picture.

**B.** Attach the Acrylic Legs (part A) side by side to the Bench body as shown, tighten the bolts clockwise by Wrench(part F) .

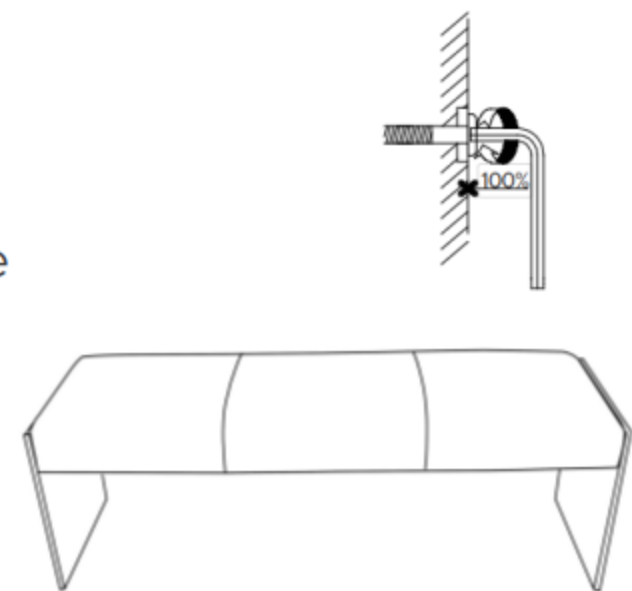
Note: Do not fully tighten the bolts at this step.



## Step 3

**A.** Tip bench back over. To assist with leveling the bench, place a heavy object or have an adult sit on the Bench to pressure it for leveling and fully tighten all bolts with Allen Wrench (part F) to secure all legs.

**B.** Complete!



Stuck?

Contact our team @ 516-888-3355  
Scan for product care!



# TOV



## Follow us!

Show your new purchase some love by tagging it on our Instagram!

-  @tovfurniture
-  516-888-3355
-  hello@tovfurniture.com
-  www.tovfurniture.com

If the future is female—your furniture should be, too. No mahogany in sight. Sexy settees shaped like lips. Price points for any budget. At TOV, we do things differently.